



# 333 CUP 2020

**40<sup>th</sup> anniversary edition**

**Dansk Sejlunions Danmarksmesterskab /**

**Open Danish Championships**

**Hobie Cat 16 SPI (DS-DM)**

**Egensedybet, September 5-6**

## **ORGANIZING AUTHORITY (OA):**

Sejlklubben Egensedybet in association with Danish Class Association and Hobie Cat Fleet 333.

## **SAILING INSTRUCTIONS**

### **1. RULES**

- 1.1 The regatta will be governed by the rules as defined in the Racing Rules of Sailing including prescriptions of Nordic Sailing Federation and Danish Sailing Association.
- 1.2 The following rules will furthermore be valid:
  - a) "Statutes for Danish Championships in Sailing" of Danish Sailing Association.
  - b) Class rules for Hobie Cat Class (incl. App. E).
  - c) The [IHCA Class Rule Penalty Policy](#) will apply
- 1.3 The Rules are changed as follows:
  - a) Rule 44.1 is changed so that the Two-Turns Penalty is replaced with:

As soon as possible, after the incident, a boat takes a penalty, by completing one of the following:

(1) Two consecutive gybes with the gennaker (if applicable) completely inside the snuffer at some time between the two gybes.

(2) Two consecutive tacks.

(3) The One-Turn Penalty.

b) RRS 35 and A4 and A5 will be changed to state, that boats failing to finish within 30 minutes after the first boat sails the course and finishes will be scored "Did Not Finish".

c) RRS 60.1(a) will be changed to state, that a competitor cannot protest for some specific parts of the sailing instructions.

d) RRS 62.1 is changed, so that deviations to the aimed sailing times will not be ground for redress.

e) RRS A4 and A5 will be changed by stating, that a boat starting later than 4 minutes after her starting signal will be scored "Did Not Start".

1.4 If there is a conflict between languages the English text will take precedence.

## 2 NOTICES TO COMPETITORS

Notices to competitors will be posted on the official notice board located at the regatta office.

## 3 CHANGES TO SAILING INSTRUCTIONS

Any change to the sailing instructions will be posted before 08.00 hrs. on the day it will take effect, except that any change to the schedule of races will be posted by 20.00 hrs. on the day before it will take effect.

## 4 SIGNALS MADE ASHORE

4.1 Signals made ashore will be displayed from the flagpole near the clubhouse.

4.2 When flag AP is displayed ashore, '1 minute' is replaced with 'not less than 45 minutes' in race signal AP.

## 5 SCHEDULE OF RACES

5.1	<i>Date</i>	<i>Max. number of races:</i>	<i>Warning Signal for the 1st race of the day</i>
	Saturday 5/9	No max.	11.00
	Sunday 6/9	No max.	10.00

5.2 The attention signals for succeeding races will be made as soon as practicable.

5.3 On the last day of the regatta no warning signal will be made after 14.30 hrs.

## 6. CLASS FLAG

Class flags will be:

<i>Class</i>	<i>Flag</i>
Hobie Cat 16spi/classic	Yellow Flag with Hobie Cat logo

## 7 RACING AREAS

The racing course will be set up in the waters north-east of the harbor. See attachment 2.

## **8 THE COURSES**

- 8.1 The diagrams in Attachment 1 show the course diagrams, including the approximate angles between legs, the order in which marks are to be passed and the side on which each mark is to be left.
- 8.2 The course will be laid to meet at target sailing time of 35 minutes. Any deviations from this shall not be grounds for a request for redress.
- 8.3 Not later than the warning signal, the race committee signal boat may display the approximate compass bearing from the boat to the first mark. Failure to display the compass bearing will not be grounds for redress.
- 8.4 When there is a gate, boats shall sail between the gate marks from the direction of the previous mark and round either gate mark.
- 8.5 The planned sailing time for the first boat is 35 minutes. A shorter or longer sailing time will not be grounds for redress.
- 8.6 If Signal Pennant 3 is displayed together with the class flag an extra lap is added. See attachment 1.

## **9 MARKS**

- 9.1 The marks 1, 2 and the gate marks 3a and 3b will be inflatable, yellow cylinders.
- 9.2 New marks, as provided in instruction 11, will be inflatable, yellow cylinders.

## **10 THE START**

- 10.1 Races will be started by using RRS 26 with the warning signal made 5 minutes before the starting signal. An attention signal (Orange Flag with one sound) will be made at least five minutes before the first warning signal for the first class to start.
- 10.2 Boats whose warning signal has not been shown, shall avoid the starting area.
- 10.3 A boat starting later than 4 minutes after her starting signal will be scored Did Not Start. This changes rule A4.
- 10.4 The starting line will be between an orange flag on the committee boat and an orange ball-shaped buoy.

## **11 CHANGE OF THE NEXT LEG OF THE COURSE**

To change the position of the next mark, the race committee will move the original mark (or the finishing line) to a new position or lay a new mark and remove the original mark as soon as practicable.

## **12 THE FINISH**

The finishing line will be between a blue flag on the race committee boat and an orange ball-shaped buoy.

## **13 PENALTY SYSTEM**

Rule 44.1 is changed so that the Two-Turns Penalty is replaced with:

As soon as possible, after the incident, a boat takes a penalty, by completing one of the following:

(1) Two consecutive gybes with the gennaker (if applicable) completely inside the snuffer at some time between the two gybes.

(2) Two consecutive tacks.

(3) The One-Turn Penalty.

#### **14 TIME LIMITS**

14.1 Target time for a race is 35 minutes.

If no boat has passed Mark 1 within 20 minutes the race will be abandoned.

14.2 Boats failing to finish within 30 minutes after the first boat class sails the course and finishes, will be scored Did Not Finish. This changes rules 35 and A4.

#### **15 PROTESTS AND REQUESTS FOR REDRESS**

15.1 Protest forms are available at the race office. Protests shall be delivered there within the protest time limit.

15.2 For each class, the protest time limit is 90 minutes after the last boat has finished the last race of the day.

15.3 Notices will be posted within 30 minutes of the protest time limit to inform competitors of hearings in which they are parties or named as witnesses. The notices will include the scheduled starting time of the hearings.

15.4 Hearings will be held in the jury office.

15.5 Breaches of SI 10.2, 17, 21, 22 and NOR 2 will not be grounds for a protest by a boat. This changes rule 60.1(a).

15.6 On the last scheduled day of racing a request for redress based on a protest committee decision shall be delivered no later than 30 minutes after the decision was posted. This changes RRS 62.2.

#### **16 SCORING**

16.1 Four races are required to constitute a series (*amending the NOR 11.1*)

16.2 (a) When fewer than five races have been completed, the score of a boat's series will be the total of her race scores.

(b) When five or more races have been completed, a boat's series score will be the total of her race scores excluding her worst score.

#### **17 SAFETY REGULATIONS**

17.1 A boat that retires from a race shall notify the race committee as soon as possible.

17.2 Danish legislation requires every boat to be equipped with personal buoyancy for the number of persons on board at any time.

#### **18 REPLACEMENT OF CREW/EQUIPMENT**

Substitution of competitors will not be allowed without prior written approval of the Technical Committee and shall comply with any restrictions in the Notice of Race or Class Rules.

Substitution of damaged or lost equipment will not be allowed without prior written approval of the Technical Committee and shall comply with any restrictions in the Notice of Race or Class Rules.

Request for substitution shall be made at the first reasonable opportunity at the Race Office. The request shall be approved by the Technical Committee.

## **19 EQUIPMENT AND MEASUREMENT CHECKS**

A boat or equipment may be inspected at any time for compliance with the class rules and sailing instructions. On the water, a boat can be instructed by the technical committee to proceed immediately to a designated area for inspection.

## **20 OFFICIAL BOATS**

The official boats may display the organizing authority's Club burgee.

## **21 SUPPORT BOATS**

21.1 Team leaders, coaches and other support personnel shall stay at least 50 meters from any racing boat.

21.2 Support boats shall register at the regatta office before the first warning signal. We would like to encourage all support boats to give their mobile numbers at the regatta office, so they can be part of the security measures.

## **22 RADIO COMMUNICATION**

A boat shall neither make radio/data transmissions while racing nor receive radio/data communications not available to all boats except in emergency situations. This restriction also applies to mobile phones.

## **23 PRIZES**

Prizes will be awarded to the top 3 boats in the competing classes.

## **24 DISCLAIMERS OF LIABILITY**

Competitors participate in the regatta entirely at their own risk. (See rule 4, Decision to Race.) The OA will not accept any liability for material damage or personal injury, or death sustained in conjunction with or prior to, during, or after the regatta.

## **25 INSURANCE**

All entrants shall have a current Public Liability and Third-Party Property Insurance policy, including coverage when racing at the venue of the Championship, of not less than € 1.500.000 or equivalent for each boat. Proof of such insurance and coverage must be presented at registration. The OA reserves the right to exclude a team from participation if such team fails to furnish the requested proof of insurance and coverage at registration. Any competitor under the age of 18 years will be required to obtain parental/ guardian consent.

## **26 COMMITTEES**

Principal Race Officer: *Anders Lund (NRO)*.

Chairman of Protest Committee: *Hans Olling (IJ/NJ)*.

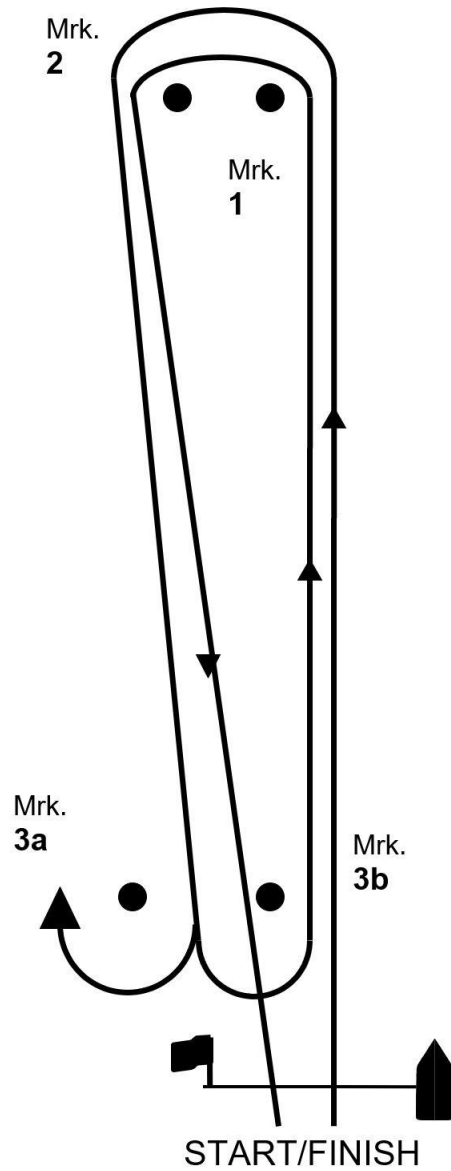
Technical Committee: *Erik Olsen*

----- oOo -----

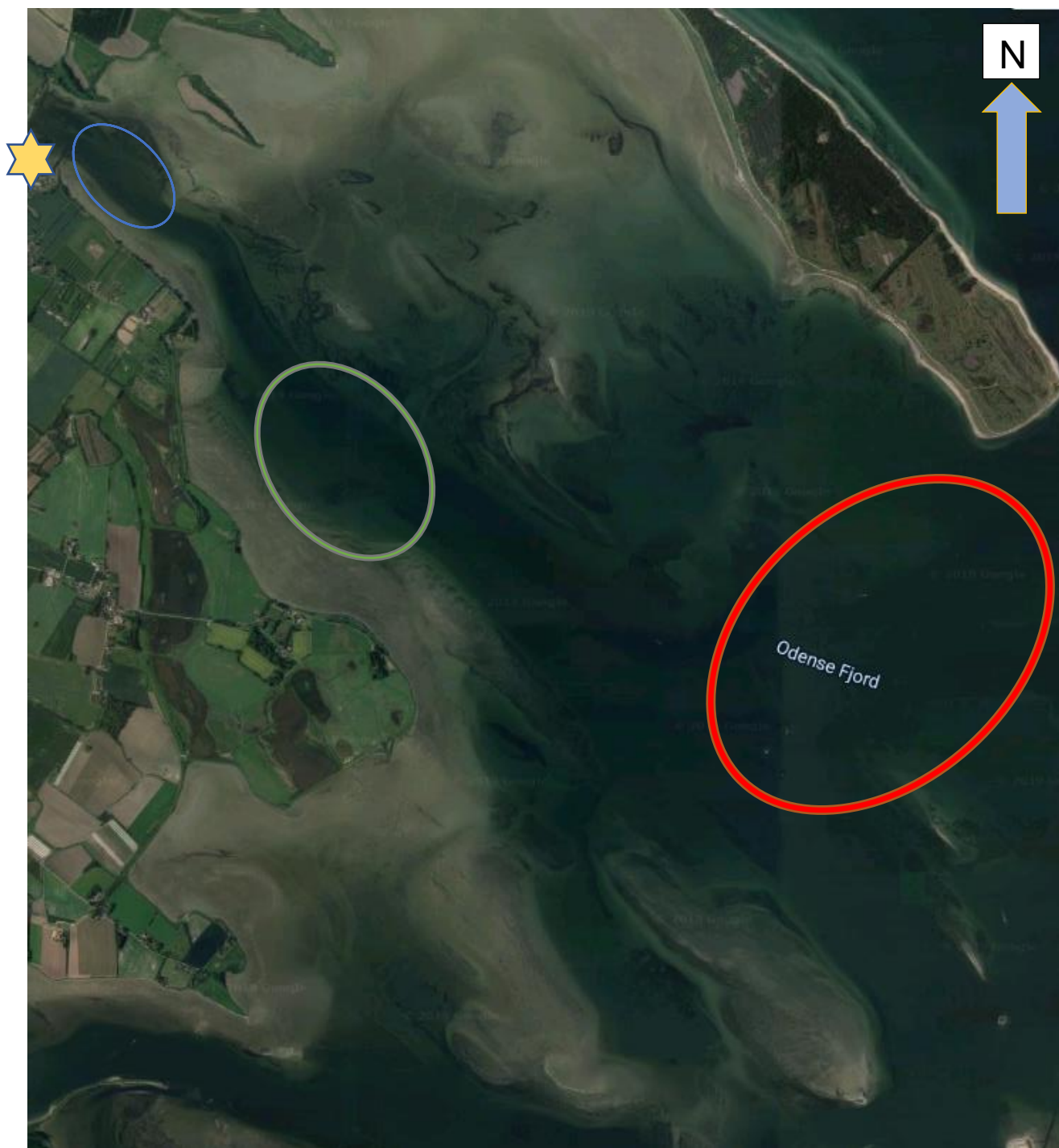
**Attachment 1: The Course**

Start-1-2-3a/3b-1-2-Finish.

If Signal Pennant 3 is displayed with the class flag the course is: Start-1-2-3a/b-1-2-3a/b-1-2-Finish



## Attachment 2: RACING AREAS



★ Havn/harbour

Rød bane/red course: Hobie Cat 16

Grøn bane/green course: RS Feva XL og Zoom 8

Blå bane/blue course: Optimist C

OBS: Følg de røde bøjler hele vejen ud til grøn og rød bane/follow the red markings all the way to the green and red course areas.